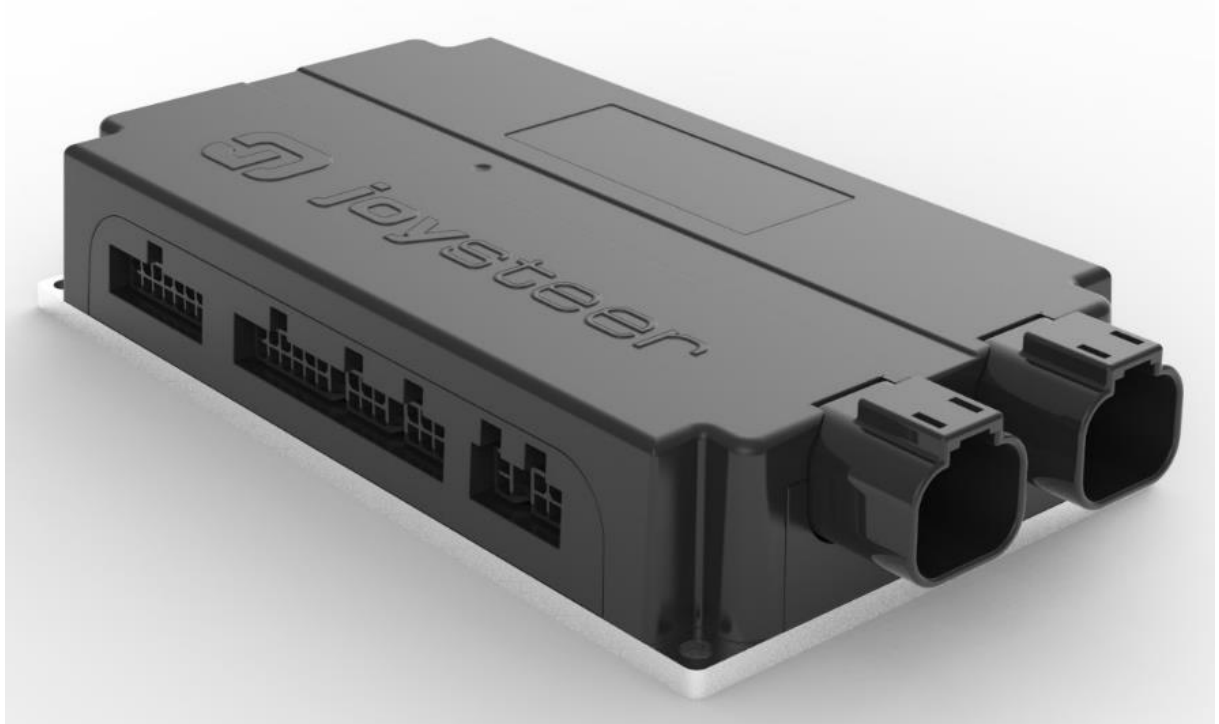


Fact Sheet Acceleration Module

Key features:

- Universal acceleration module (all-electric solution, no physical movement of the pedal)
- Retrofit solution for all car types
- Compatible with all types of pedal signals: Analog, PWM, SENT and their combinations
- Built in pedal calibration
- CAN-Bus control interface
- Bluetooth or CAN-Bus connection for parameterisation and commissioning
- EMC compliance acc. ECE-R10 (test result outstanding)
- OEM pedal (when powered "Off") and software pedal mode (when powered "On")



Description:

The Acceleration Module is designed to work with minimal user interaction to reduce integration time and costs. The module automatically detects the car characteristics. System calibration and diagnosis is performed through a modern tablet computer application allowing immediate fine tuning of driver parameters.

Technical Data of Acceleration Module:

- Operates on 12VDC or 24VDC
- Operating temperature: -20° to 80°C
- IP Class IP 5K0

Plugs, cables and connections:

For standard and supported cars, the car specific cable for the connection between the pedal and the Accelerator Module is included in the delivery of the system. For unknown car types, please contact with the system supplier before ordering the system. Then some measurements are needed. In exceptional cases, a universal cable can be provided for self-confectioning by the workshop.

CAN-Bus Communication:

- Identifier 11-Bit-Identifier / Base frame format (CAN 2.0A)
- Baud rate 500 kbit/s (high speed)

Data/Signals from Control-System to Accelerator Module (abstract):

Timing of these CAN signals = asynchronous (no timing restriction)

- Set gas value

Data/Signals from Acceleration Module to Control-System (abstract):

Timing of these CAN signals = periodic, every 10msDiagnostic

- Actual gas value
- Diagnostics

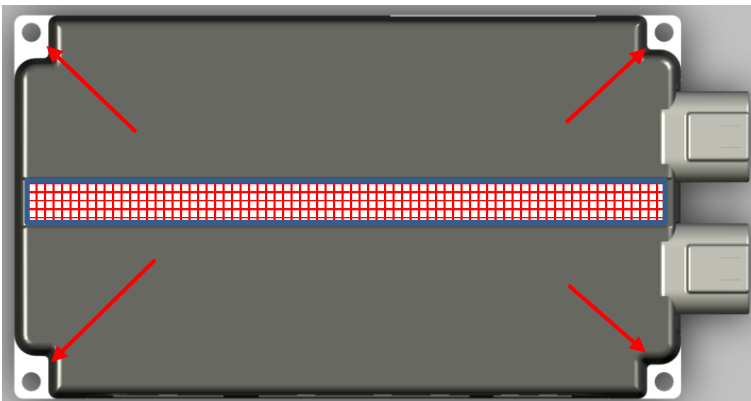
Parametrisation



The parametrisation can be done with the SystemManager tool. Runs on Windows and Android. Connection to the Acceleration Module with a USB-CAN-Bus Interface or by Bluetooth.

Dimensions:

The module can be mounted using the 4 holes in the corners of the base plate or with the help of a Velcro strip, which is attached along the groove of the cover and then wrapped around an attachment point in the car.



Dimension of the Accelerator Module = 157 x 90 x 30 mm