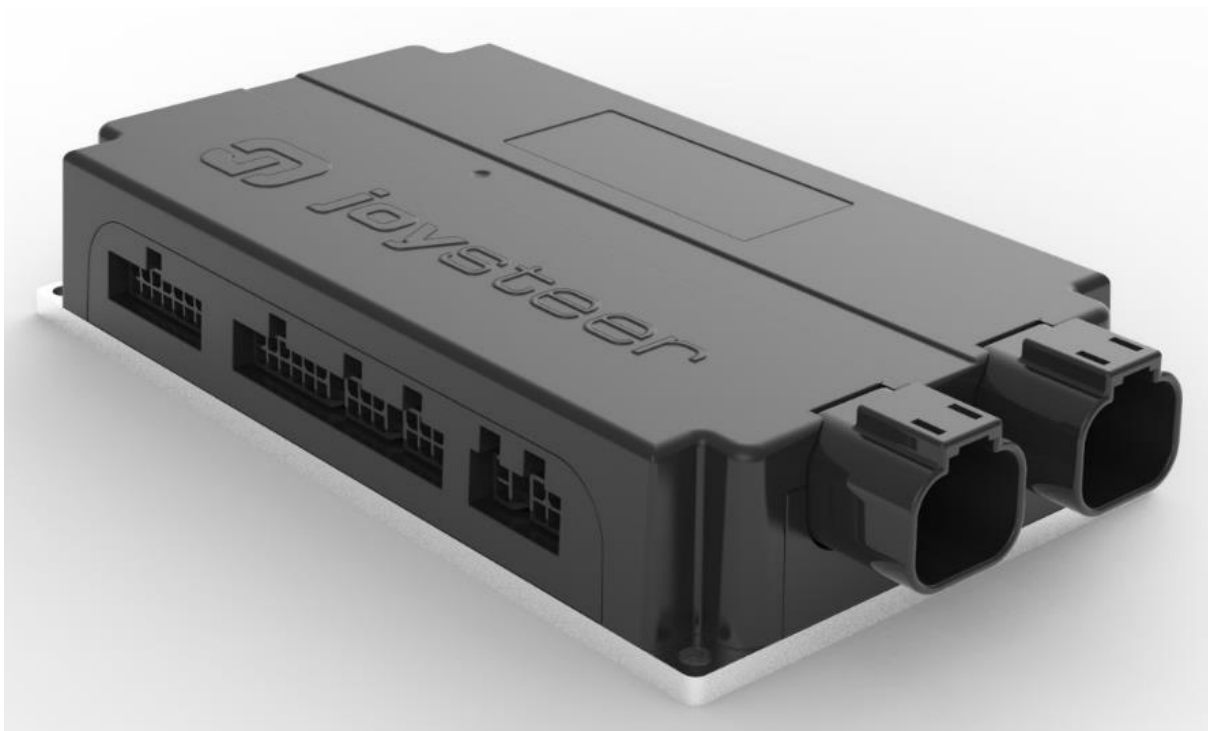


AC module fact sheet

Key features:

- Universal electronic acceleration module
- Module for retrofit in every car
- Emulates signals for all kind of gas pedals (Analog and Digital)
- Different HMI's (Human machine interfaces) to be connected
- Acceleration over CAN
- Additional instructor input
- SystemManager App for calibration
- SystemManager runs on Windows and Android OS
- Multi language SystemManager
- Wireless connection from Android tablet to module over Bluetooth
- Wired connection from PC to module over CAN
- Selectable original OEM pedal or AC simulation
- Over the air updates possible
- Remote access possible
- Integrated Error Log
- Hill holder functionality
- Eco mode (limits the maximum pedal output)
- Gas-brake overlap functionality



The AC module is designed to work with minimal user interaction to reduce car integration time and costs. The module automatically detects the car characteristics. Best driving experience is achieved due to the possibility to adapt important driving characteristics to the driver's requirements.

System calibration and diagnosis is performed through a modern tablet computer application allowing immediate fine tuning of driver parameters.

Technical Data:

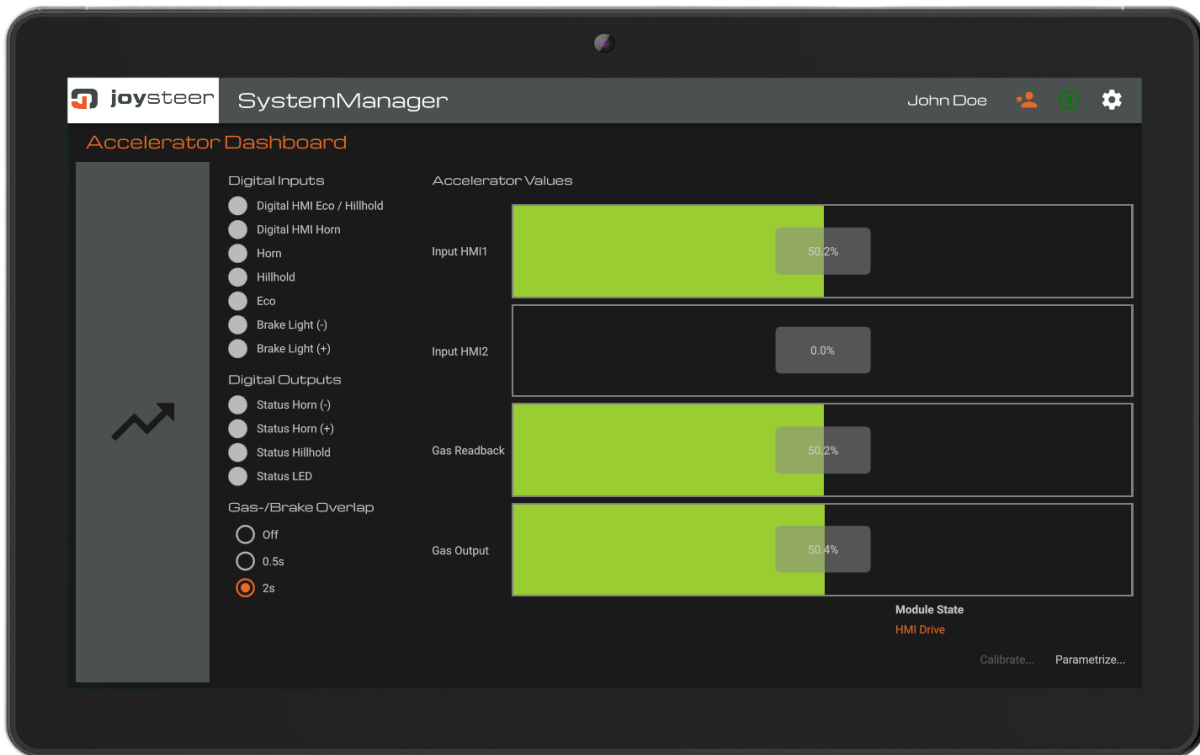
- High safety standard with certified redundant dual core controller
- Runs on certified Real Time Operation System SafeRTOS
- Functional safety level ASIL C
- Operates on 12V or 24 V
- Operating temperature: -40° to 85°C
- I/O's:
 - HMI Horn
 - HMI Hill hold
 - HMI Eco
- EMC approved ECE R 10
- IP Class IP40

All engineered and produced in Switzerland

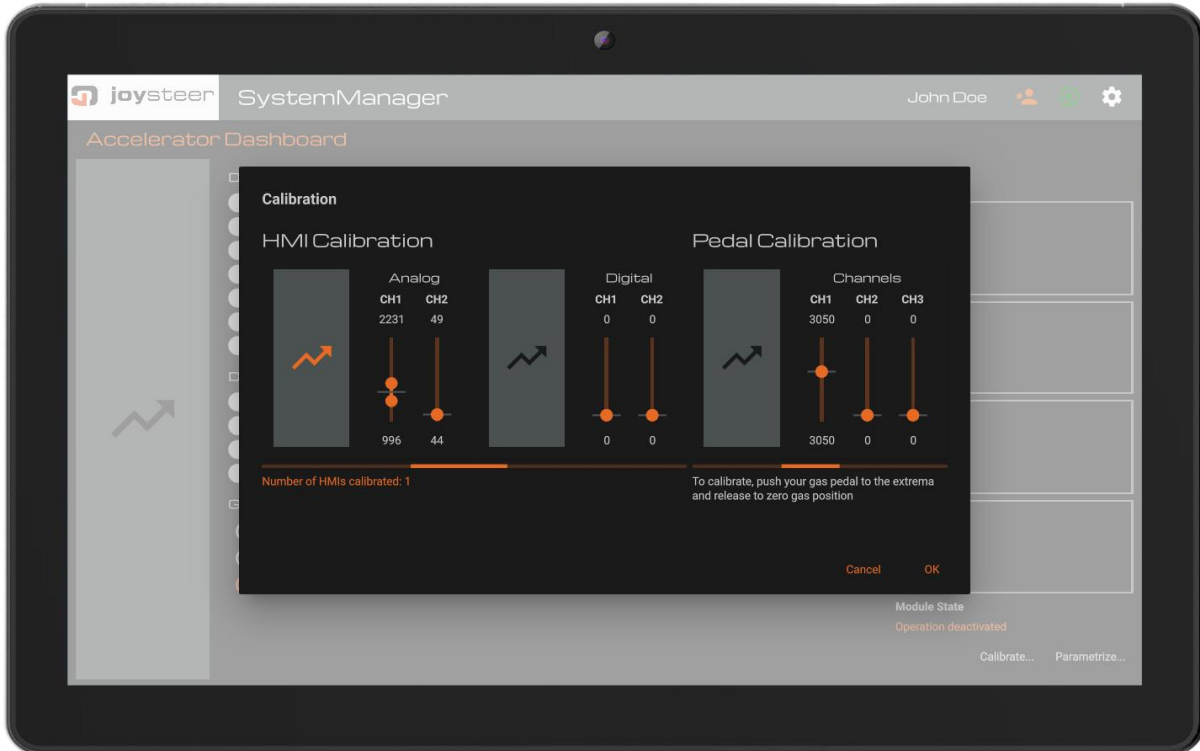
→ Swiss made



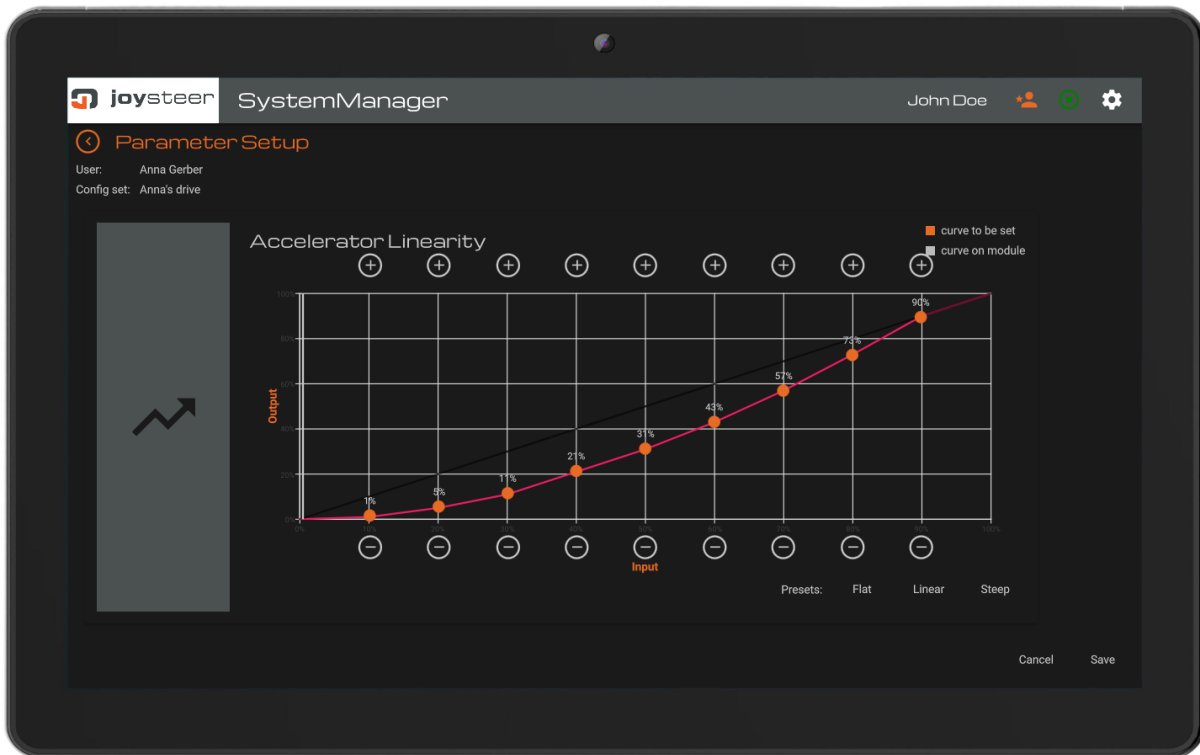
SystemManager on tablet, connected to the module over Bluetooth



SystemManager showing the accelerator values



SystemManager showing the calibration process



SystemManager showing the gas curve adjustment